

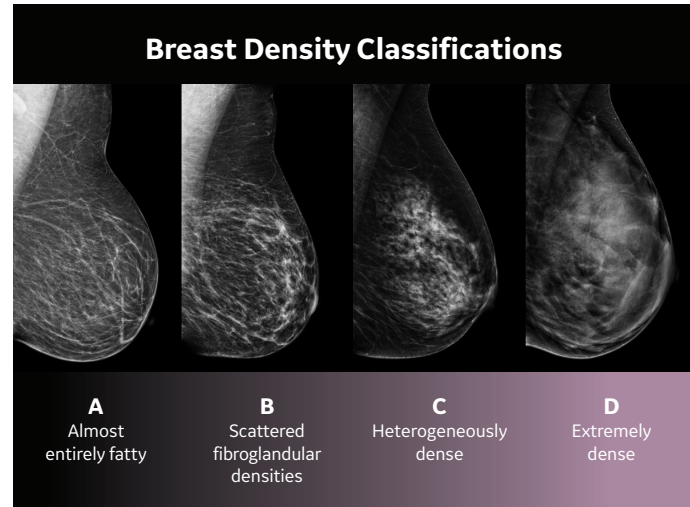
# BREAST CANCER RISK ASSESSMENT

## WHAT IS BREAST DENSITY?

Breasts are made of fat and breast tissue. A breast with more tissue than fat is considered dense. At RDC, breast density is determined by software to minimize subjectivity and provide you with a highly individualized breast tissue category and scale.

## WHY DOES BREAST DENSITY MATTER?

On a mammogram, dense tissue and masses both appear white, so a suspicious lump may be hidden in dense tissue. When dense tissue is scanned with ultrasound, tissue appears white and masses appear black - making them easier to see. Having dense breast tissue may also increase the risk of developing breast cancer 4 to 6 times<sup>1</sup>. Supplemental screening with Automated Breast Ultrasound (ABUS) has been shown to improve breast cancer detection over mammography alone for women with dense breasts<sup>2</sup>.



For more information on dense breasts, visit: [www.DenseBreast-info.org](http://www.DenseBreast-info.org)

1. Boyd et al, New England Journal of Medicine 2007;356:227-36.  
2. FDA PMA P110006.

## PERSONAL BREAST DENSITY:



## TYRER-CUZICK RISK MODEL

The Tyrer-Cuzick (TC) tool estimates lifetime breast cancer risk based on answers to a series of screening questions such as age at first period, height, weight, childbearing history, family history of breast cancer, etc.

**YOUR ESTIMATED LIFETIME BREAST CANCER RISK IS \_\_\_\_\_\***

\*Note: This information is determined by completing the Progeny family history and risk assessment questionnaire. If you did not complete this prior to your appointment, please inform your technologist you would like to do so now in order to determine your risk.

## BASED ON YOUR INFORMATION, WE RECOMMEND:

<p><b>Not Dense</b> 1-19 or no estimate and A/B Density Annual 3D Mammogram</p>	<p><b>Dense Tissue</b> 1-19 or no estimate and C/D Density Annual 3D Mammogram + Annual ABUS</p>	<p><b>High Risk</b> 20+ Annual 3D Mammogram + Annual Breast MRI (6 mos. after mammo)</p>
---	--	--



# See What Matters.

Automated Whole Breast Ultrasound (ABUS) is the only FDA-approved ultrasound technology for breast cancer detection in women with dense breast tissue.

ABUS breast cancer screening is specifically developed to help doctors find cancers hidden in dense breast tissue, which may be more difficult to detect with mammography alone.

If your breast density/TC score on the reverse indicated higher risk, Reno Diagnostic Centers recommends **Automated Breast Ultrasound (ABUS)** for increased cancer detection in addition to mammography.

## *The ABUS Screening Experience*

From the moment you lie down on the exam table, you'll realize that ABUS screening is completely unlike a mammogram. A layer of lotion is applied to your breast, and then a scanner is firmly positioned on your breast to acquire the images. The exam is painless, takes approximately 15 minutes, and provides your doctor with clear 3D ultrasound images. An RDC radiologist will review the ABUS screening images along with your mammogram. A report will be available for you to view on our patient portal.

## *How The ABUS Exam Is Different*

Unlike 2D or 3D mammography, which uses radiation, ABUS screening uses sound waves to create 3D pictures of the breast tissue. ABUS screening, along with your screening mammogram, will help provide a more complete evaluation of your dense breast tissue.



**If ABUS is recommended for you, please call 775-323-5083 to schedule.**



**Reno Diagnostic Centers**

*When it has to be done right.*

ABUS is available at our downtown location:  
590 Eureka Ave. Reno, NV 89512

Connect with Us:

 /RenoDiagnosticCenters

 /RenoDiagnosticCenters